

# THE CHESTERFIELD | AFFORDABLE HOUSING IN SOUTH LOS ANGELES



COMING  
SUMMER  
2022

The Chesterfield is a new community of 42 affordable homes in South Los Angeles that offers residents aged 55+ furnished studio apartments and access to a wide range of support services.



## The Chesterfield Features:

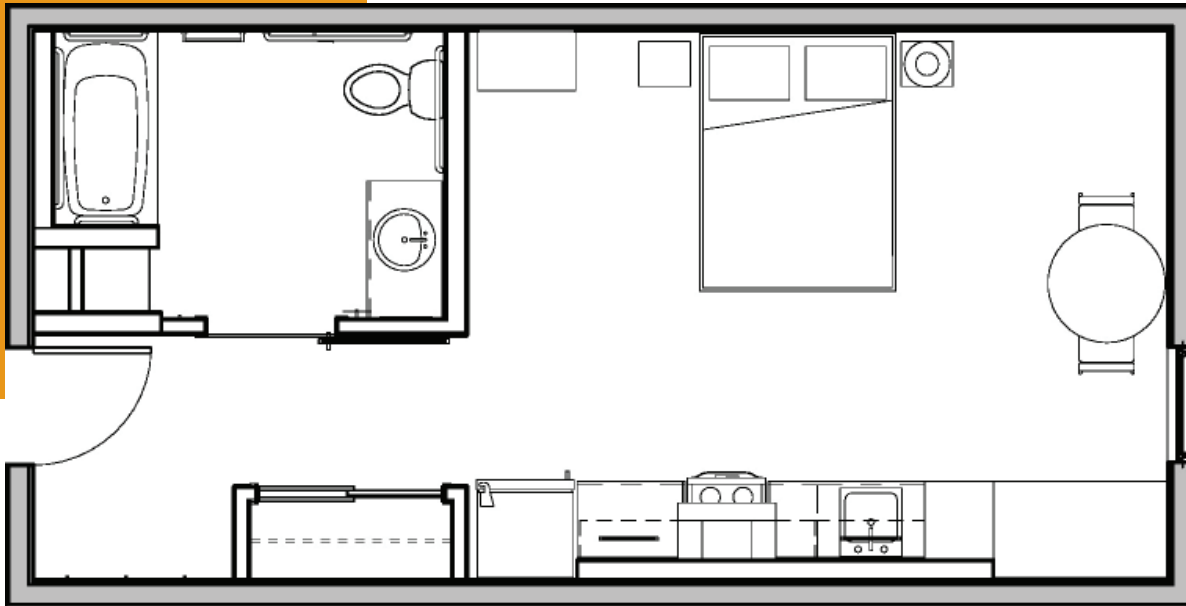
- Single-person occupancy with furnished studios
- Access to on-site support services
- Secure building with 24-hour camera monitoring
- Off-street parking/Building has no on-site parking
- Designated smoking area/No smoking in units
- On-site laundry facilities
- Community room with TV
- Computer workstations
- Free Wifi in common areas
- On-site property management
- Rooftop lounge
- BBQ area
- Pet friendly
- Central elevator
- Bicycle storage room

**MOBILITY & SENSORY UNITS AVAILABLE**



*This housing is offered without regard to race, color, national origin, sex, religion, ancestry, genetic information, source of income, age, marital status, familial status, sexual orientation or preference, gender identity, or disability, or any other basis prohibited by law.*

# THE CHESTERFIELD | APARTMENT LAYOUT



**The Chesterfield offers high-quality affordable homes and services for people who have experienced homelessness. Apartments come fully furnished with a studio layout similar to the above diagram. Average studio is 400 square feet.**

#### Apartment Amenities:

- Full kitchens and private baths
- Furnished interiors
- Full size refrigerator
- Stove, oven and microwave
- Central A/C and heat
- Ample kitchen storage and closet
- Laminate flooring
- Utilities included

## UNIT TYPE AND SIZES

Unit Size	Total Units	Sq. Ft.	# Mobility Units	#Sensory Units
Studio	42	405	42	2



*A person with a disability may request a reasonable accommodation (a reasonable change in policies), a reasonable structural modification, an accessible unit or the provision of auxiliary aids and services, in order to have equal access to a housing program. If you or anyone in your household has a disability, and because of that disability requires a specific accommodation, modification or auxiliary aids or services to fully use our housing services, please contact our staff for a reasonable accommodation form.*